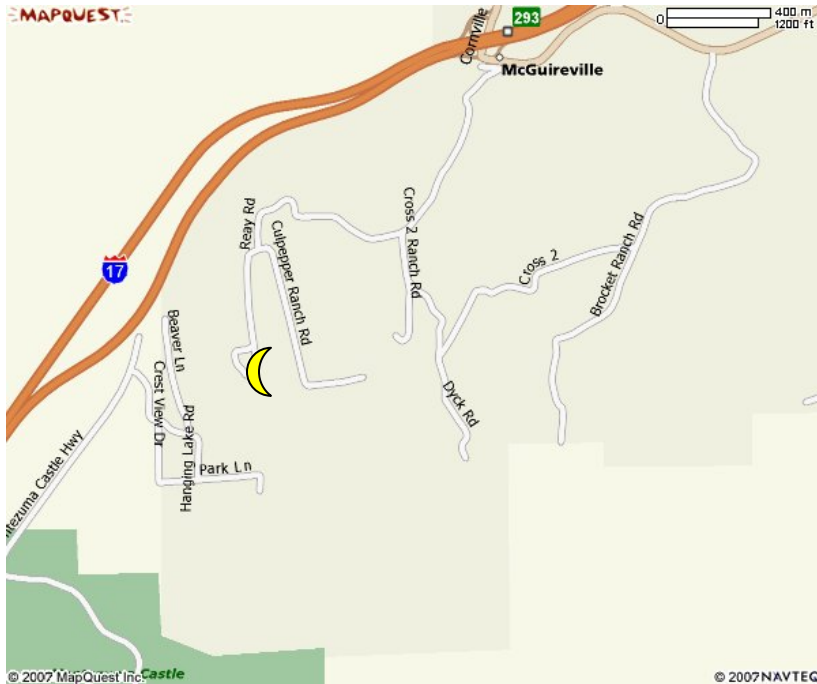


Luna Vista Bed and Breakfast – 1062 E. Reay Road – Rimrock

Phone: 928 567-4788 – OR – Toll Free 1-800-611-4788



Directions to Luna Vista Bed and Breakfast: Driving through Deliverance to a Peaceful Piece of Paradise.

Luna Vista is located 2.5 miles down private and Forest Service primitive dirt roads with varying levels of maintenance. Motorcycles and low clearance vehicles are not recommended.

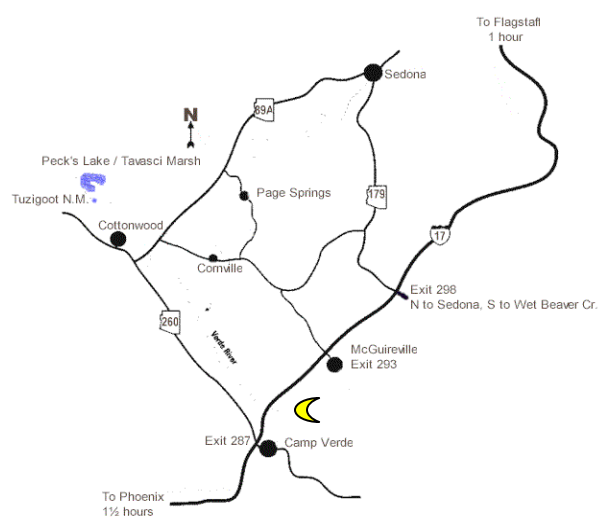
From Phoenix and points south: Interstate Highway I-17 North to Exit 293 (McGuireville - Rimrock - Lake Montezuma - Montezuma's Well.)

From exit ramp, after STOP sign proceed straight. Exit road becomes Beaver Creek Road.

Take Beaver Creek Road **0.75 miles** to Brocket Ranch Road - first road on the right. **Now leaving the pavement behind** - proceed **0.85 miles** on this graded road to the first road on to the right - Dragonhead Road. Turn right on Dragonhead Road - proceeding **SLOWLY 0.3 miles** to end of road and a large working horse ranch and training arenas.

Proceed **SLOWLY**, turning left at ranch (crescent moon sign) and follow road around ranch (try not to disturb horses) and down the hill along the Coconino Forest trail (Cross 2 Ranch Road) about **0.6 miles**. Near the bottom of the hill, bear right proceeding **SLOWLY** down an extremely rocky portion of Forest Service road to meet Reay Road.

At Reay Road (crescent moon sign) turn left and precede **0.6 miles SLOWLY** crossing over (believe it or not two speed bumps then) a single lane bridge over Beaver Creek. To your left, you will see a rock cave and swinging footbridge crossing the creek. Continue along the main road where you will come to a fork in the road. At fork, follow posted sign for Reay Road (and crescent moon sign), continuing another **0.2 miles** to Luna Vista's electronic gates - 1062 East Reay Road on a big red rock. Push call button on rock for entry.



From Flagstaff and points north: I-17 South to Exit 293. Turn right at Stop sign at end of Exit ramp. Follow signs for Lake Montezuma and Montezuma's Well. Follow directions above from Beaver Creek Road to Brocket Ranch Road to Luna Vista B & B.

Luna Vista Bed and Breakfast is located:

- ❖ 18 miles South of Uptown Sedona
- ❖ 5 miles North of Camp Verde
- ❖ 1 mile North 'as the crow flies' from Montezuma's Castle National Park
- ❖ 45 miles South of Flagstaff
- ❖ 95 miles North of Phoenix / Scottsdale
- ❖ 132 miles South of the Grand Canyon